

## COLEGIO VERBO DIVINO

Installation Notes: Cancha de Fútbol 11 - Clase II  
Customer: --  
Project Code: 0079-SF-CVD.FUT-1024  
Date: 10/10/2024

Remarks



Lighting Designer: LD Esteban Roca  
Address: Lima - Perú  
Tel.-Fax

Remarks:

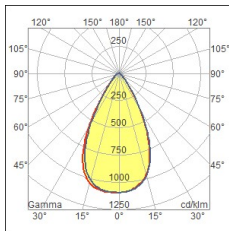
# 1. Project Data and Results

## 1.1 Area Information

Surface	Color RGB	Coefficient Reflectance	Average Illum. [lx]	Minimum [lx]	Maximum [lx]	Min/Ave	Min/Max	Ave/Max
Ambient - Ground	0 128 0	25%	236	46.8	372	0.20	0.13	0.63

## 1.2 Luminaire/Measurement Info

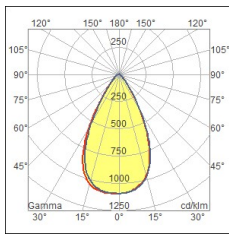
Ref.			Color RGB	Total Luminaire Num.	Sour.Ref.
A	Manufacturer		255,255,255 (3870 K)	11	Source-A
	Luminaire Name	LED FLOOD LIGHT			
	Measurement Name	(LED FLOOD LIGHT)			
	Luminaire Code	CO-T600-900W-60D			
	Measurement Code	(CO-T600-900W-60D)			



Dimmer	Flux [lm]	Current [A]	Power [W]	Luminaires nr.
100 %	150049.80	0.0000	900.5300	11

Ref.			Color RGB	Total Luminaire Num.	Sour.Ref.
------	--	--	--------------	----------------------------	-----------

B	Manufacturer		255,255,255 (3870 K)	1	Source-A
	Luminaire Name Measurement Name	LED FLOOD LIGHT (LED FLOOD LIGHT)			
	Luminaire Code Measurement Code	CO-T600-900W-60D (CO-T600-900W-60D)			



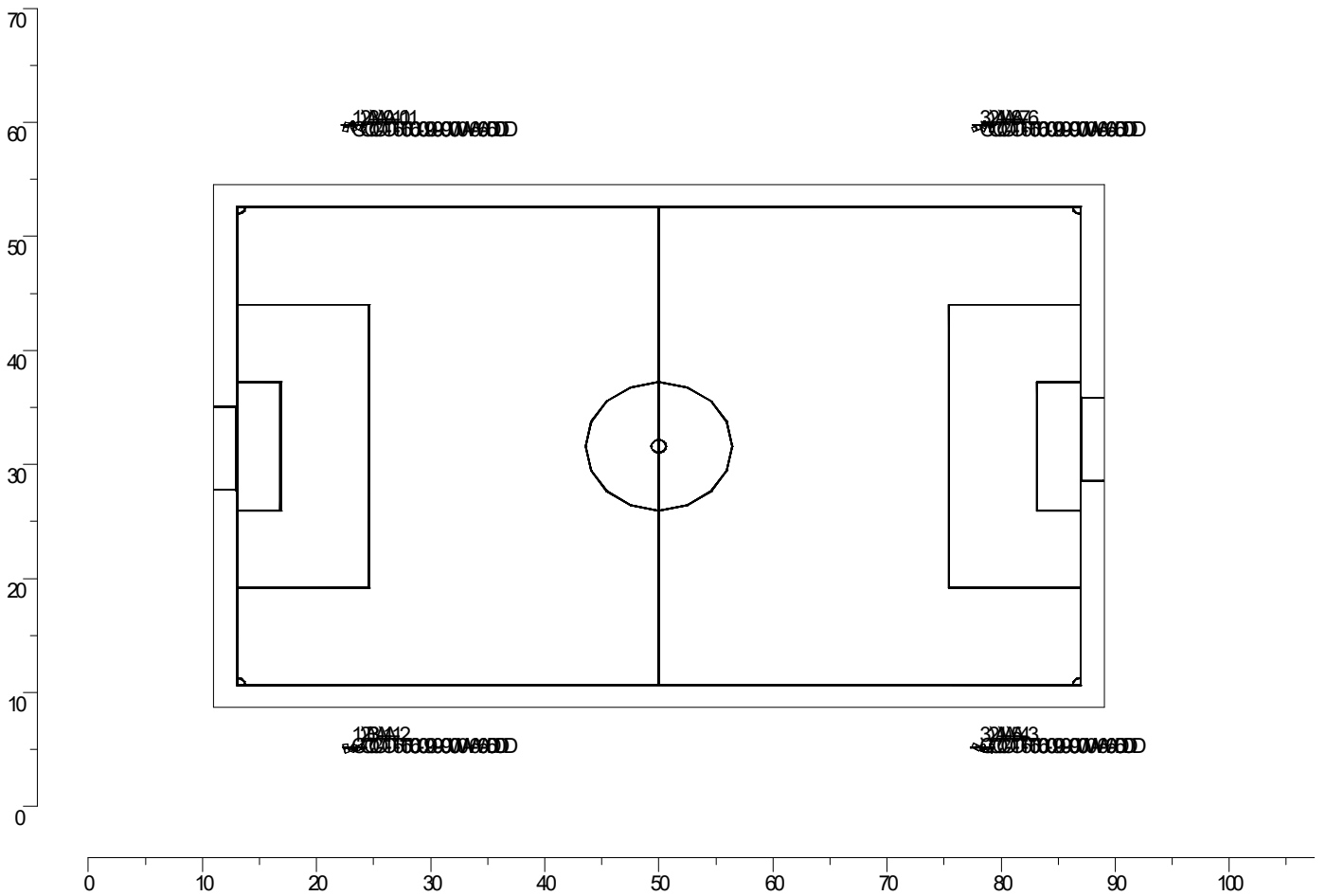
Dimmer	Flux [lm]	Current [A]	Power [W]	Luminaires nr.
100 %	150049.80	0.0000	900.5300	1

### 1.3 Source Information

Sour.Ref.	Name	Code	Power [W]	Current [mA]	Flux [lm]	Color [K]	Total Number
Source-A	CO-T600-900W-60D	CO-T600-900W-60D	900.53	0.0	150050	0	12

## 2. Luminaire Data

### 2.1 2D Plane View with Luminaires



## 2.2 Luminaire Table

Ref.	On/Off	Coeff. Mant.	Dimmer	Flux [lm]	Current [A]	Power [W]	Luminaire Position x[m] y[m] z[m]	Luminaire Rotation rx[°] ry[°] rz[°]
B-1	On	0.90	100 %	150049.80	0.0000	900.5300	22.55 5.30 14.00	62.5 -0.0 14.5
A-1	On	0.90	100 %	150049.80	0.0000	900.5300	23.30 5.30 14.00	70.2 0.0 -23.9
A-2	On	0.90	100 %	150049.80	0.0000	900.5300	24.05 5.30 14.00	69.0 0.0 -66.7
A-3	On	0.90	100 %	150049.80	0.0000	900.5300	79.15 5.30 14.00	63.3 0.0 -11.9
A-4	On	0.90	100 %	150049.80	0.0000	900.5300	78.40 5.30 14.00	70.3 -0.0 25.5
A-5	On	0.90	100 %	150049.80	0.0000	900.5300	77.65 5.30 14.00	66.2 0.0 62.7
A-6	On	0.90	100 %	150049.80	0.0000	900.5300	79.15 59.40 14.00	64.5 -0.0 -168.6
A-7	On	0.90	100 %	150049.80	0.0000	900.5300	78.40 59.40 14.00	69.8 0.0 154.1
A-8	On	0.90	100 %	150049.80	0.0000	900.5300	77.65 59.40 14.00	66.7 0.0 116.5
A-9	On	0.90	100 %	150049.80	0.0000	900.5300	22.55 59.40 14.00	63.2 0.0 166.3
A-10	On	0.90	100 %	150049.80	0.0000	900.5300	23.30 59.40 14.00	69.7 -0.0 -155.3
A-11	On	0.90	100 %	150049.80	0.0000	900.5300	24.05 59.40 14.00	68.7 -0.0 -113.8

## 2.3 Aiming Summary Table

Mast	Ref.	On/Off	Coeff. Mant.	Dimmer	Flux [lm]	Current [A]	Power [W]	Luminaire Position x[m] y[m] z[m]	Luminaire Rotation rx[°] ry[°] rz[°]	Aiming x[m] y[m] z[m]	R.Axis [°]
Mast	B-1	On	0.90	100 %	150049.80	0.0000	900.5300	22.55 5.30 14.00	62.5 -0.0 14.5	15.84 31.31 -0.00	0.0
Mast	A-1	On	0.90	100 %	150049.80	0.0000	900.5300	23.30 5.30 14.00	70.2 0.0 -23.9	39.02 40.85 -0.00	-0.0
Mast	A-2	On	0.90	100 %	150049.80	0.0000	900.5300	24.05 5.30 14.00	69.0 0.0 -66.7	57.50 19.69 -0.00	-0.0
Mast_MirX	A-3	On	0.90	100 %	150049.80	0.0000	900.5300	79.15 5.30 14.00	63.3 0.0 -11.9	84.88 32.58 -0.00	-0.0
Mast_MirX	A-4	On	0.90	100 %	150049.80	0.0000	900.5300	78.40 5.30 14.00	70.3 -0.0 25.5	61.57 40.56 -0.00	0.0
Mast_MirX	A-5	On	0.90	100 %	150049.80	0.0000	900.5300	77.65 5.30 14.00	66.2 0.0 62.7	49.51 19.83 0.00	-0.0
Mast_MirXY	A-6	On	0.90	100 %	150049.80	0.0000	900.5300	79.15 59.40 14.00	64.5 -0.0 -168.6	84.97 30.64 -0.00	0.0
Mast_MirXY	A-7	On	0.90	100 %	150049.80	0.0000	900.5300	78.40 59.40 14.00	69.8 0.0 154.1	61.82 25.20 -0.00	-0.0
Mast_MirXY	A-8	On	0.90	100 %	150049.80	0.0000	900.5300	77.65 59.40 14.00	66.7 0.0 116.5	48.55 44.89 -0.00	-0.0
Mast_MirY	A-9	On	0.90	100 %	150049.80	0.0000	900.5300	22.55 59.40 14.00	63.2 0.0 166.3	15.98 32.46 -0.00	-0.0
Mast_MirY	A-10	On	0.90	100 %	150049.80	0.0000	900.5300	23.30 59.40 14.00	69.7 -0.0 -155.3	39.13 24.96 0.00	0.0
Mast_MirY	A-11	On	0.90	100 %	150049.80	0.0000	900.5300	24.05 59.40 14.00	68.7 -0.0 -113.8	56.89 44.89 0.00	0.0

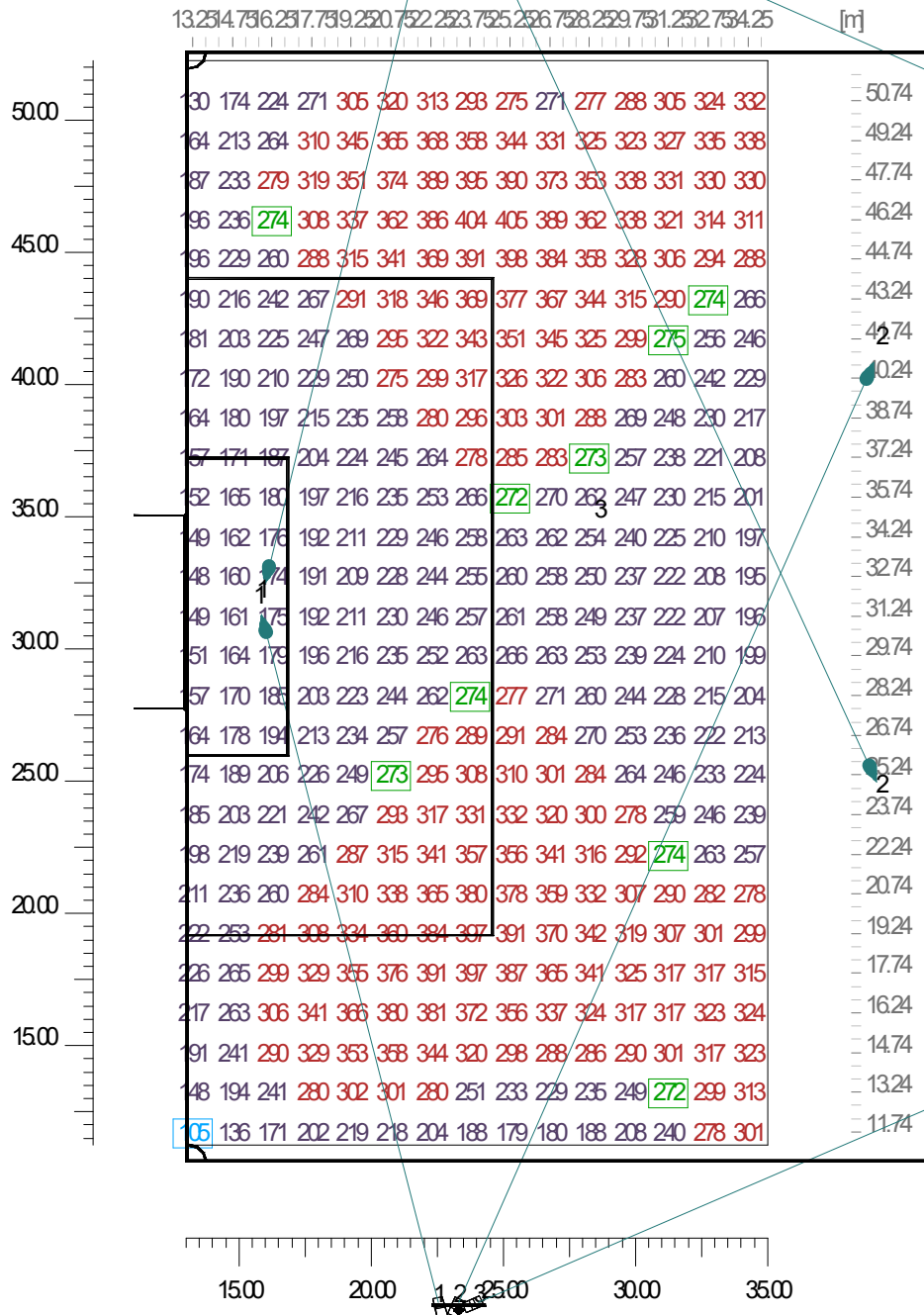
### 3. Results Table

#### 3.1 Horizontal Illuminance Values on: Eh- Fútbol 5 - 01

Results	Average	Minimum	Maximum	Min/Ave	Min/Max	Ave/Max
Horizontal Illuminance	273 lx	105 lx	407 lx	0.38	0.26	0.67

Specific Lighting Power  
Calculation Type

0.00 [ W/(m<sup>2</sup>\*100lx) ]  
Only Dir.

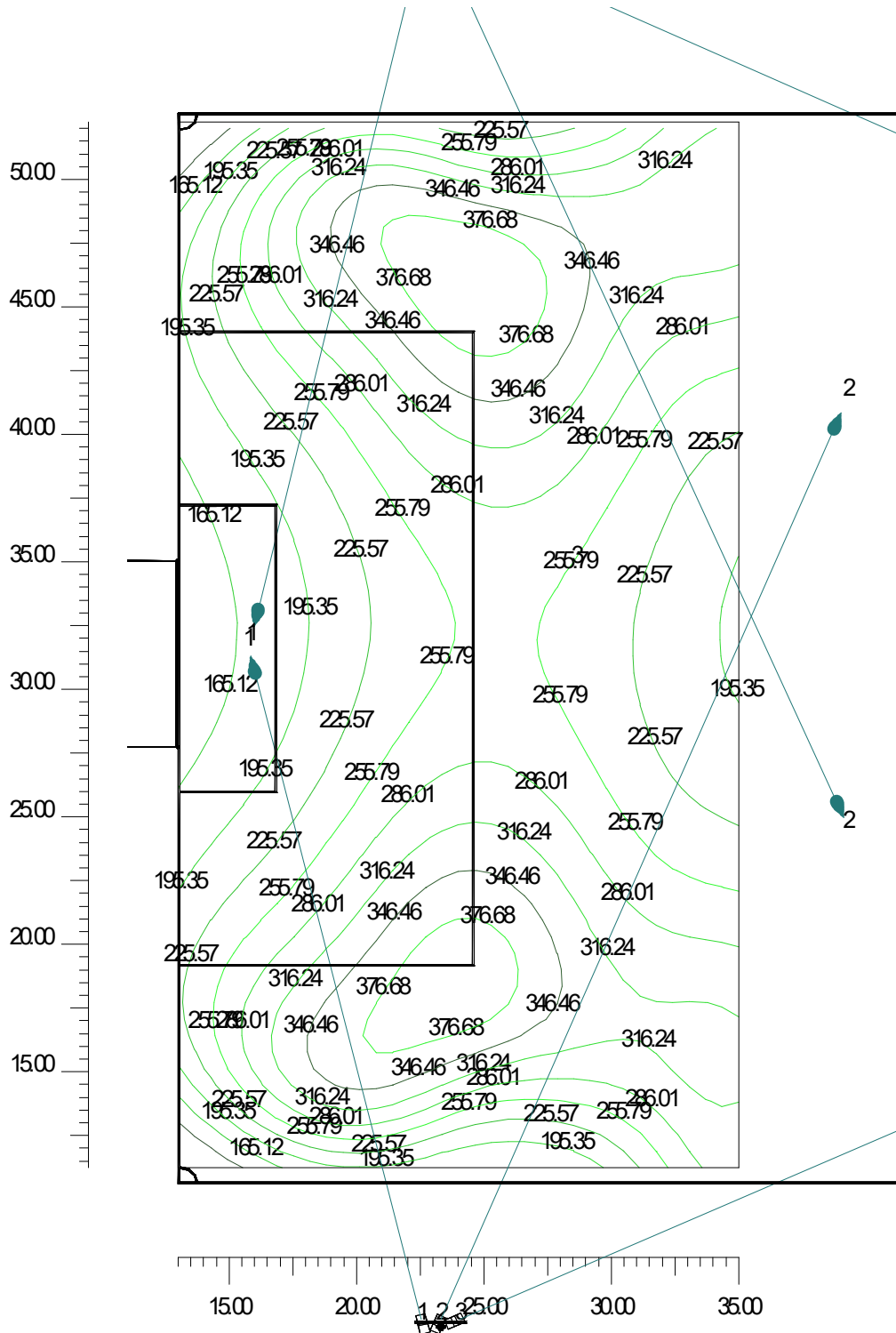


### 3.2 Horizontal Illuminance Iso Curves on: Eh- Fútbol 5 - 01

Results	Average	Minimum	Maximum	Min/Ave	Min/Max	Ave/Max
Horizontal Illuminance	273 lx	105 lx	407 lx	0.38	0.26	0.67

Specific Lighting Power  
Calculation Type

0.00 [ W/(m<sup>2</sup>\*100lx) ]  
Only Dir.



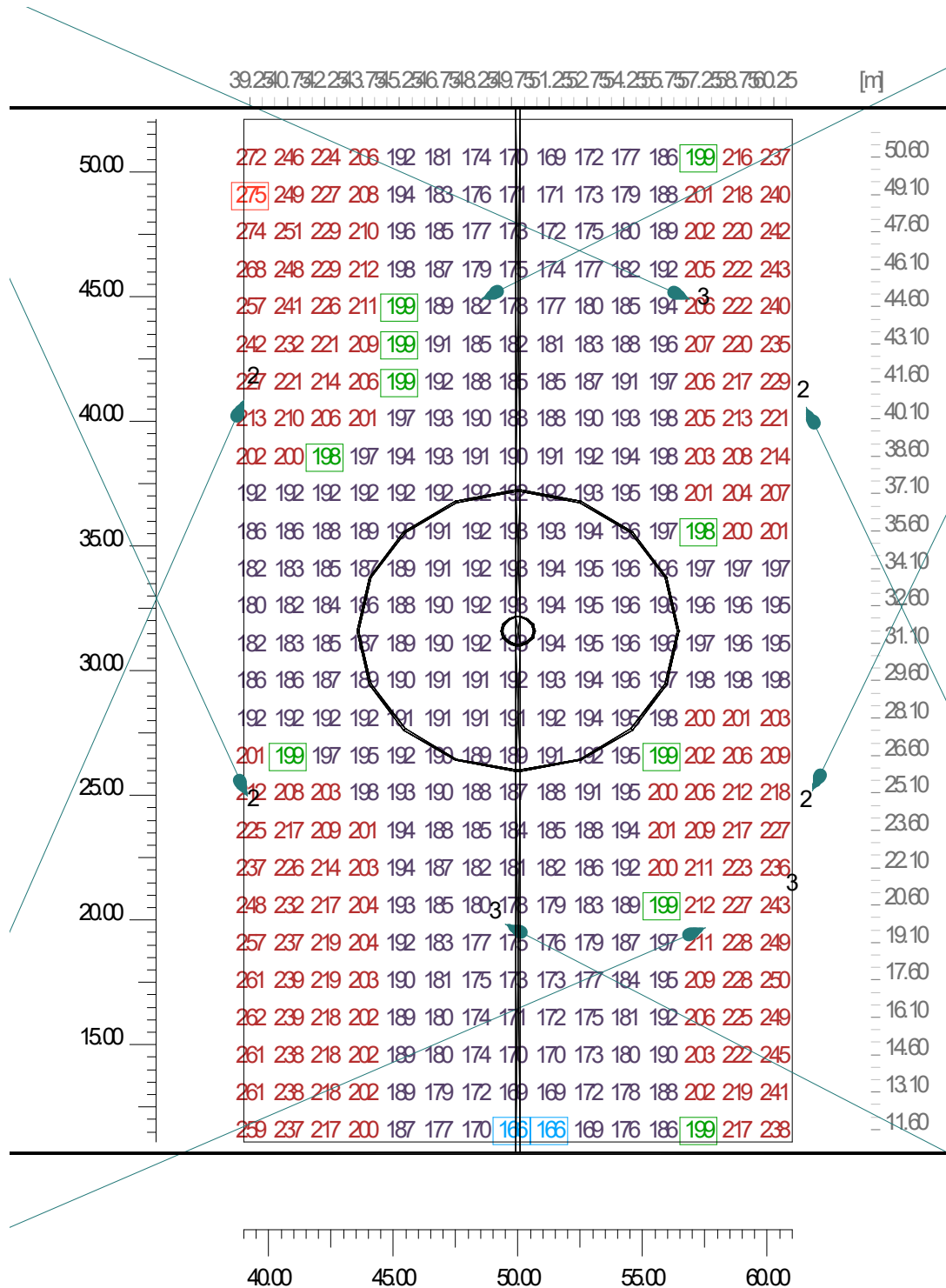


### 3.3 Horizontal Illuminance Values on: Eh- Fútbol 5 - 02

Results	Average	Minimum	Maximum	Min/Ave	Min/Max	Ave/Max
Horizontal Illuminance	199 lx	166 lx	275 lx	0.83	0.60	0.72

Specific Lighting Power  
Calculation Type

0.00 [ W/(m<sup>2</sup>\*100lx) ]  
Only Dir.

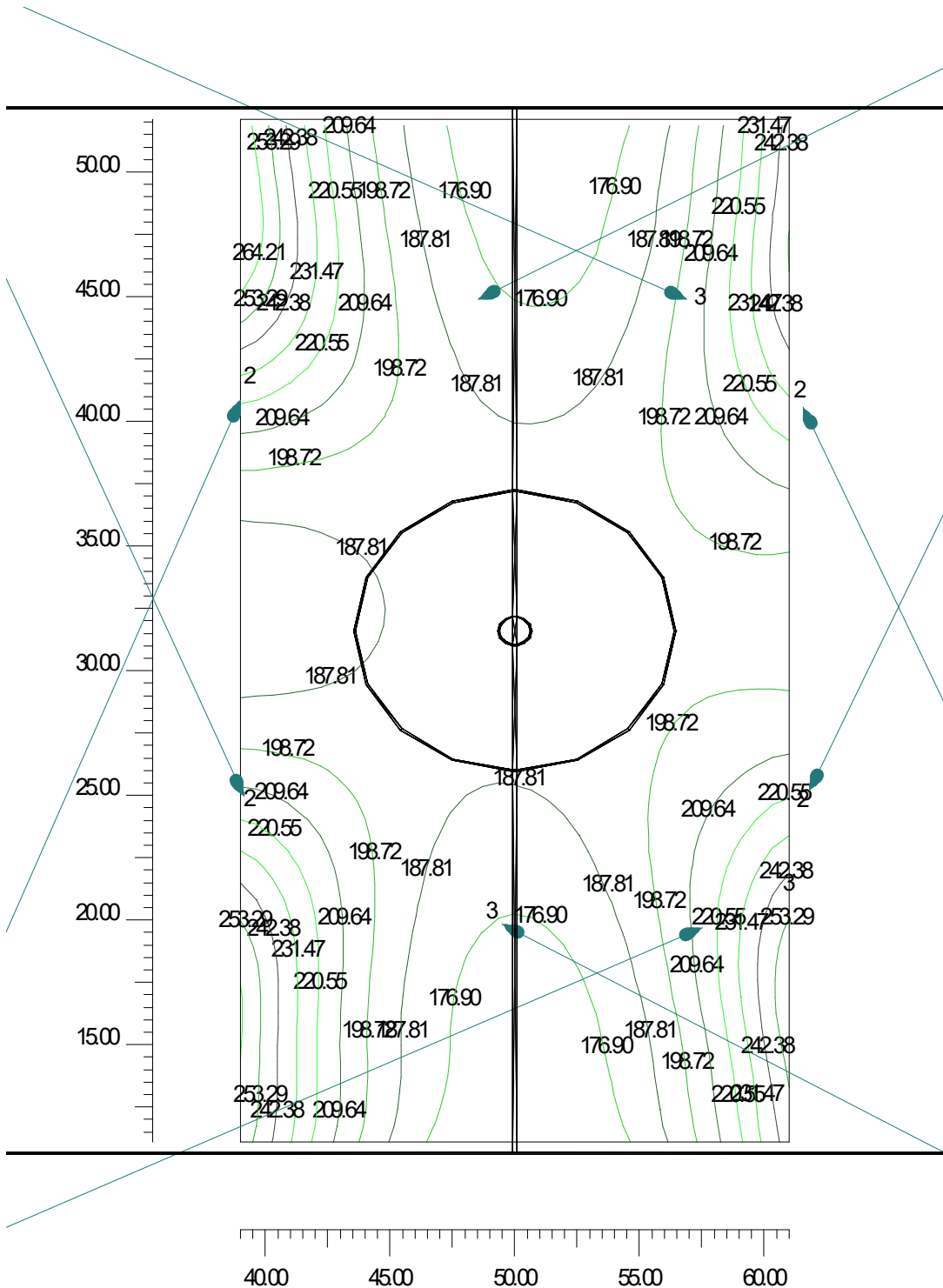


### 3.4 Horizontal Illuminance Iso Curves on: Eh- Fútbol 5 - 02

Results	Average	Minimum	Maximum	Min/Ave	Min/Max	Ave/Max
Horizontal Illuminance	199 lx	166 lx	275 lx	0.83	0.60	0.72

Specific Lighting Power  
Calculation Type

0.00 [ W/(m<sup>2</sup>\*100lx) ]  
Only Dir.

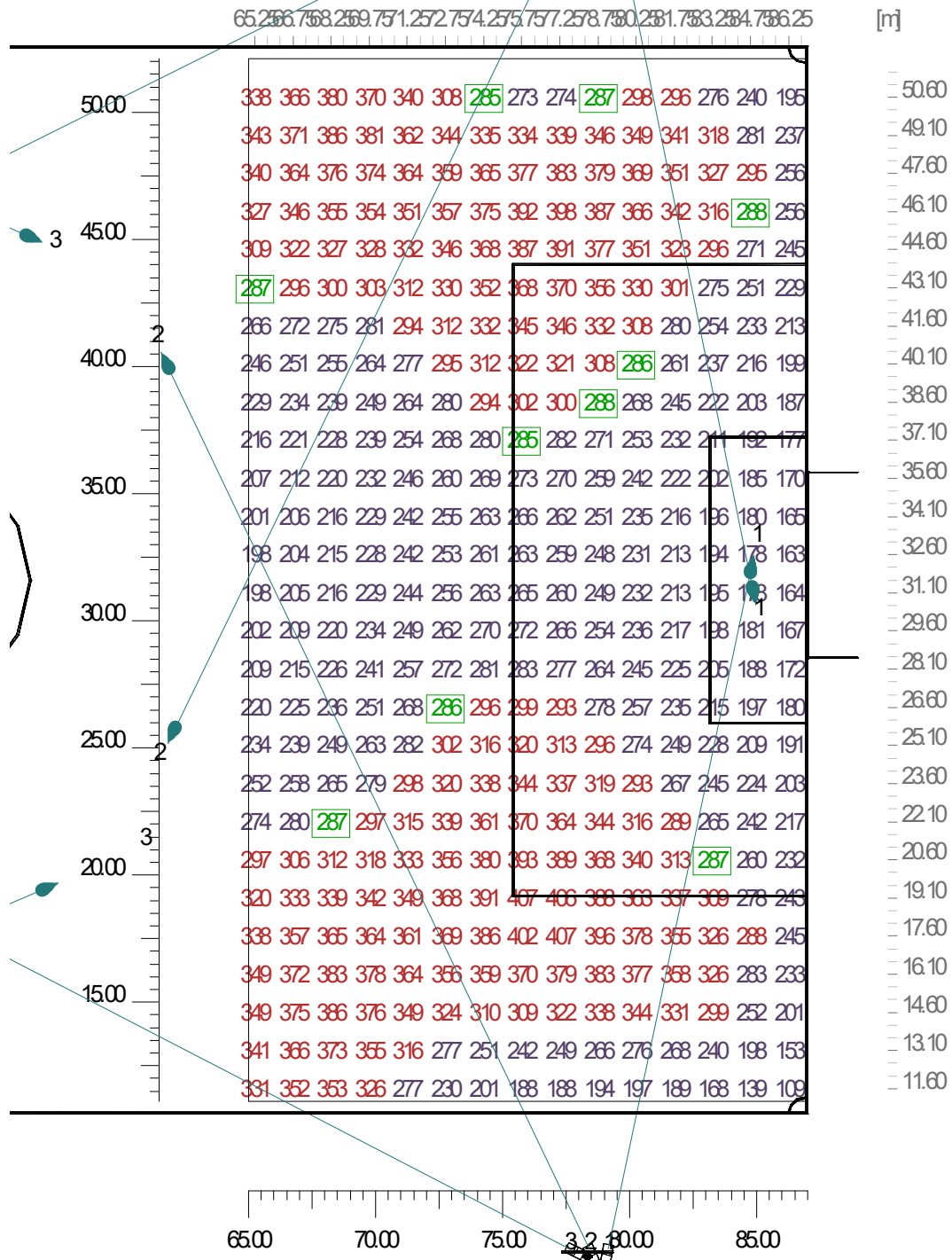


### 3.5 Horizontal Illuminance Values on: Eh- Fútbol 5 - 03

Results	Average	Minimum	Maximum	Min/Ave	Min/Max	Ave/Max
Horizontal Illuminance	287 lx	100 lx	411 lx	0.35	0.24	0.70

Specific Lighting Power  
Calculation Type

0.00 [ W/(m<sup>2</sup>\*100lx) ]  
Only Dir.

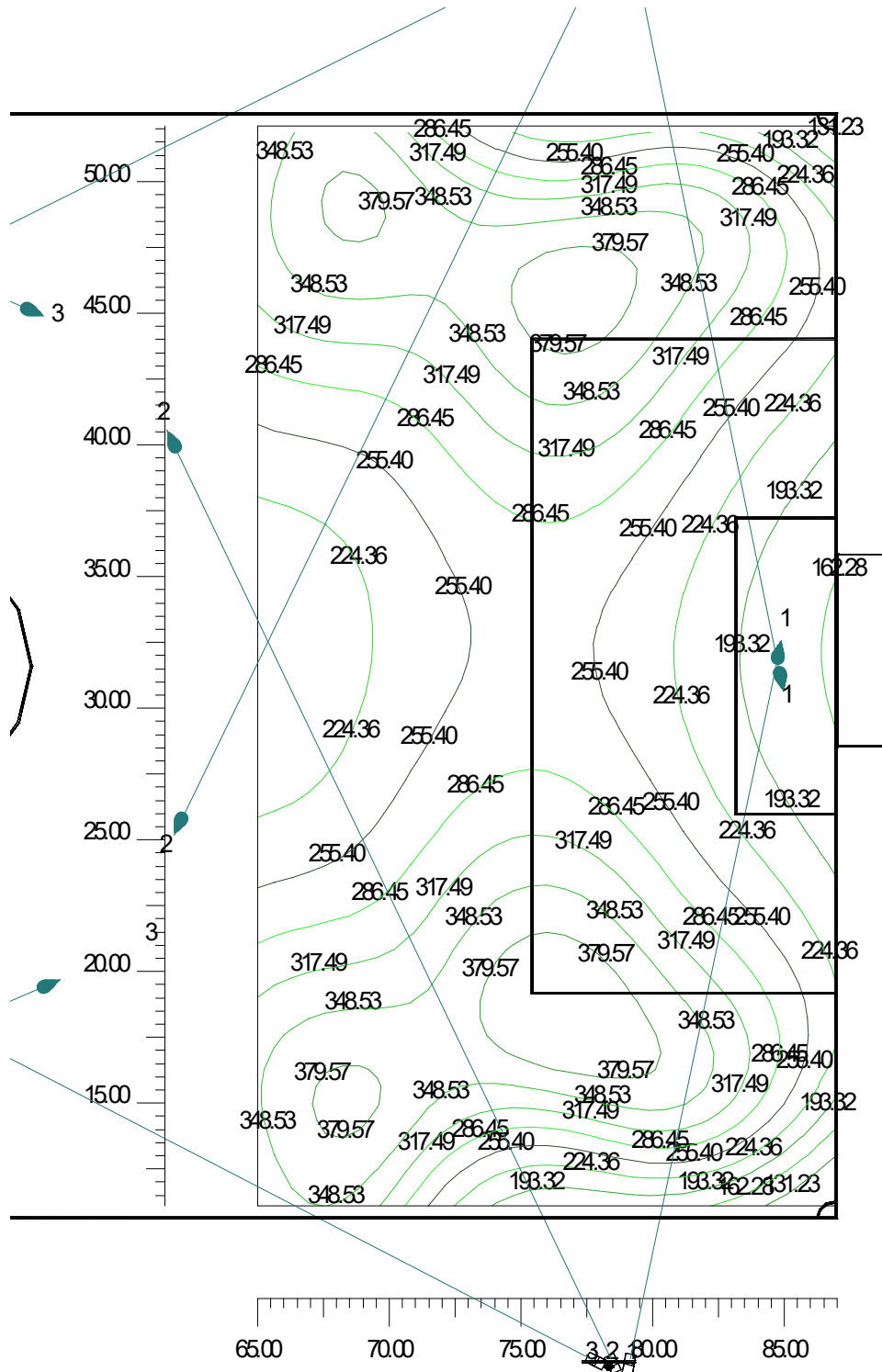


### 3.6 Horizontal Illuminance Iso Curves on: Eh- Fútbol 5 - 03

Results	Average	Minimum	Maximum	Min/Ave	Min/Max	Ave/Max
Horizontal Illuminance	287 lx	100 lx	411 lx	0.35	0.24	0.70

Specific Lighting Power  
Calculation Type

0.00 [ W/(m<sup>2</sup>\*100lx) ]  
Only Dir.

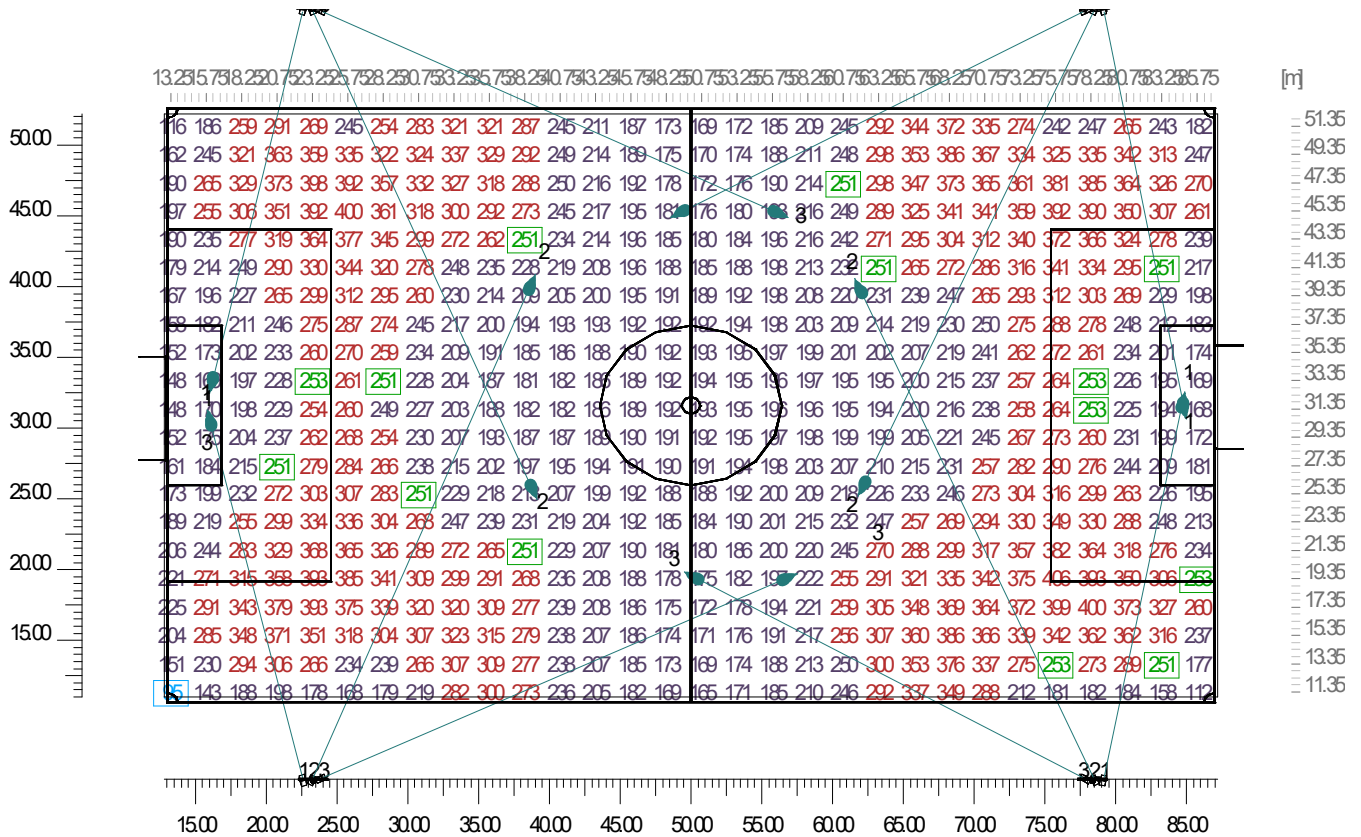


### 3.7 Horizontal Illuminance Values on: Eh- Fútbol 11

Results	Average	Minimum	Maximum	Min/Ave	Min/Max	Ave/Max
Horizontal Illuminance	252 lx	95 lx	411 lx	0.38	0.23	0.61

Specific Lighting Power  
Calculation Type

0.00 [ W/(m<sup>2</sup>\*100lx) ]  
Only Dir.

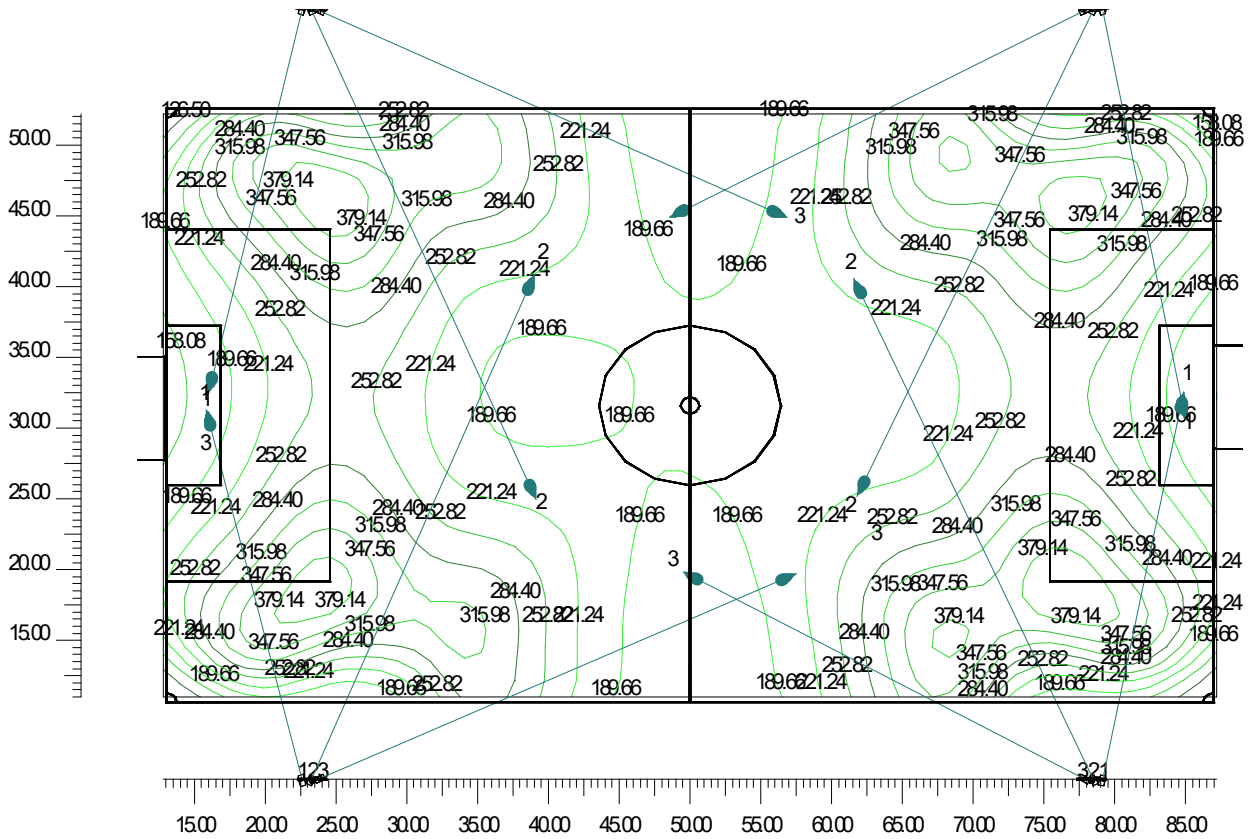


### 3.8 Horizontal Illuminance Iso Curves on: Eh- Fútbol 11

Results	Average	Minimum	Maximum	Min/Ave	Min/Max	Ave/Max
Horizontal Illuminance	252 lx	95 lx	411 lx	0.38	0.23	0.61

Specific Lighting Power  
Calculation Type

0.00 [ W/(m<sup>2</sup>\*100lx) ]  
Only Dir.

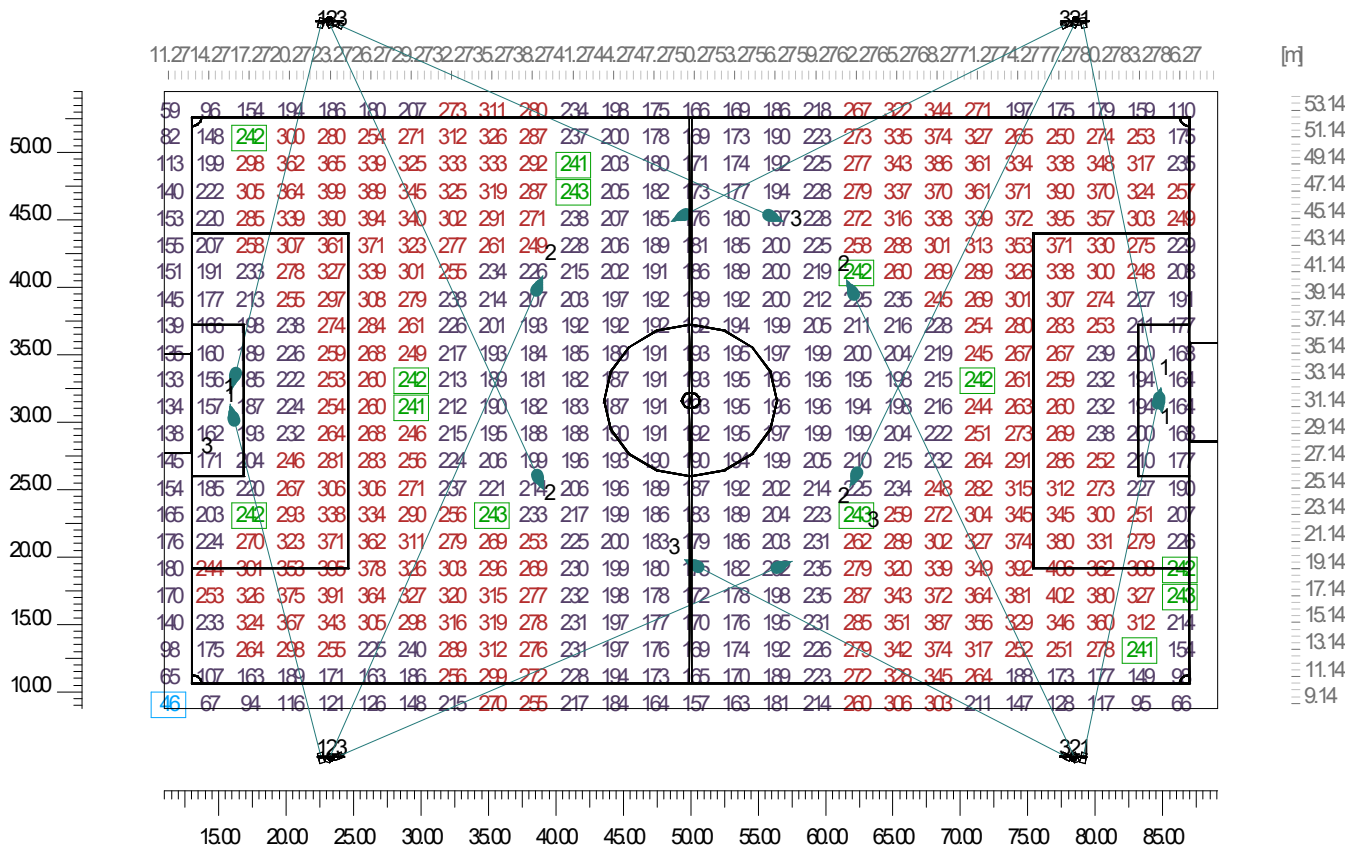


### 3.9 Horizontal Illuminance Values on: Working Plane (h=1.00 m)

Results	Average	Minimum	Maximum	Min/Ave	Min/Max	Ave/Max
Horizontal Illuminance	242 lx	46 lx	411 lx	0.19	0.11	0.59

Specific Lighting Power  
Calculation Type

0.00 [ W/(m<sup>2</sup>\*100lx) ]  
Only Dir.



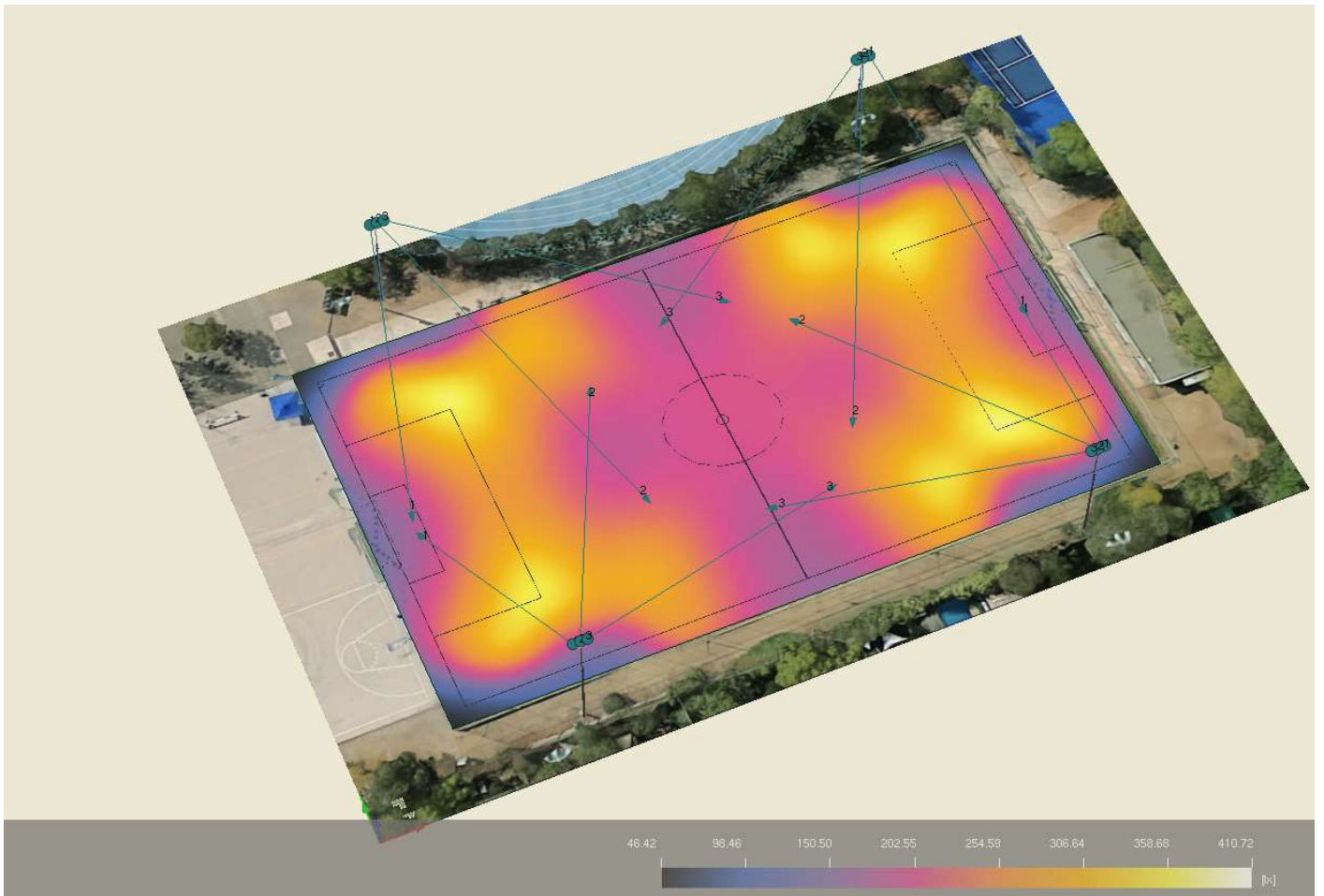
## 4. Images

### 4.1 Images

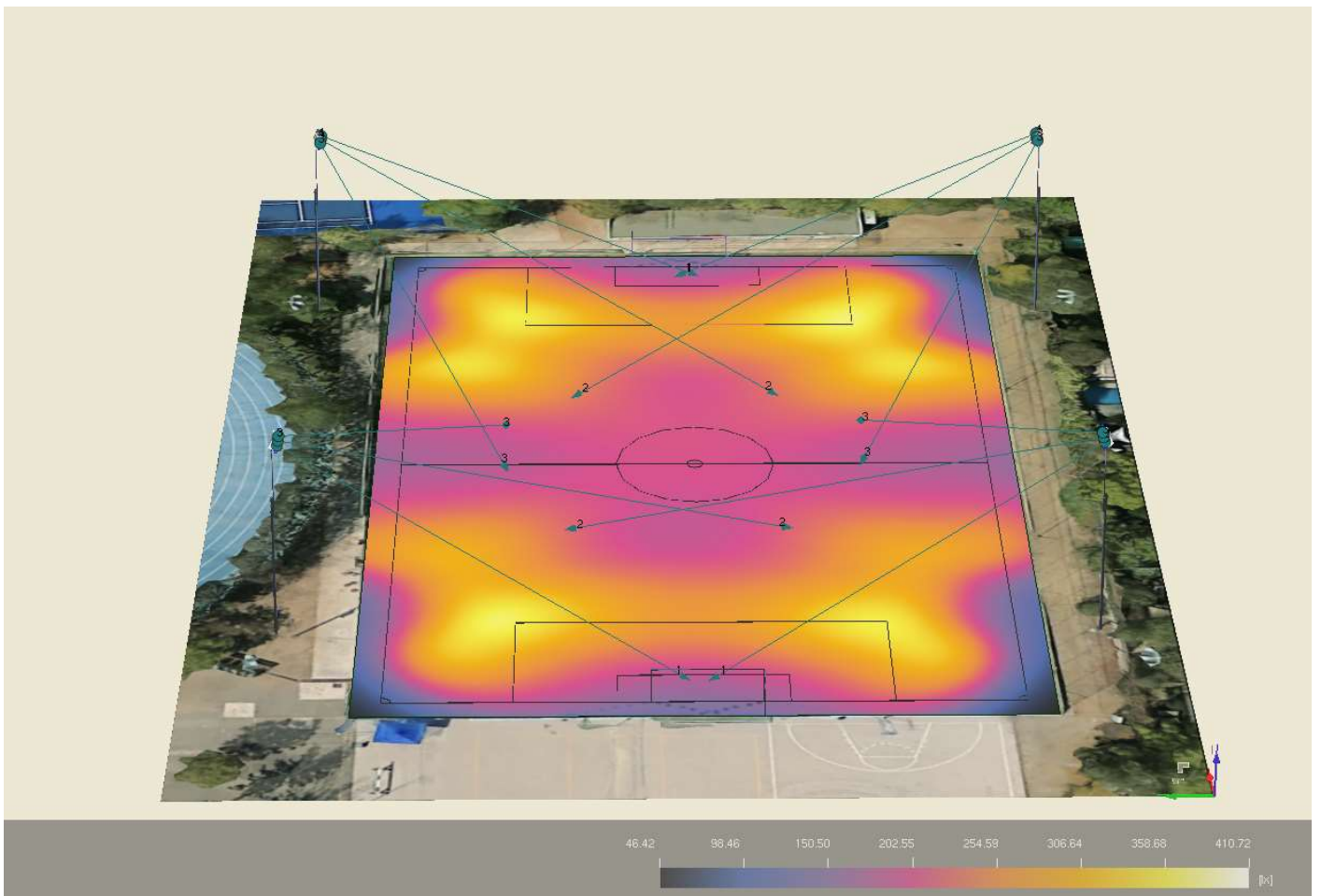




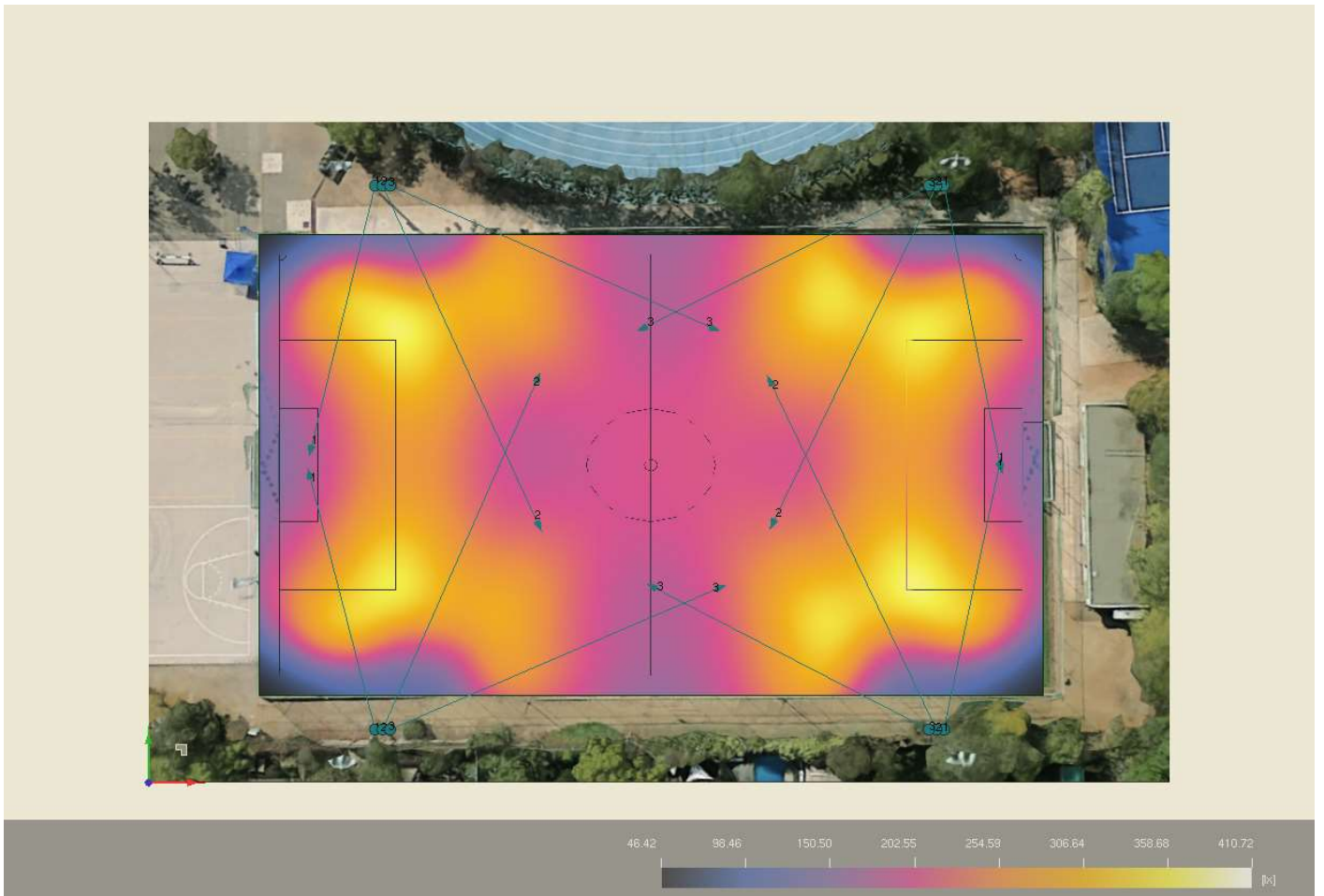
## 4.2 Images



### 4.3 Images



### 4.4 Images



# Summary

<b>General Information</b>	<b>1</b>
<b>1 Project Data and Results</b>	
1.1 Area Information	2
1.2 Luminaire/Measurement Info	2
1.3 Source Information	4
<b>2 Luminaire Data</b>	
2.1 2D Plane View with Luminaires	5
2.2 Luminaire Table	6
2.3 Aiming Summary Table	6
<b>3 Results Table</b>	
3.1 Horizontal Illuminance Values on: Eh- Fútbol 5 - 01	7
3.2 Horizontal Illuminance Iso Curves on: Eh- Fútbol 5 - 01	8
3.3 Horizontal Illuminance Values on: Eh- Fútbol 5 - 02	9
3.4 Horizontal Illuminance Iso Curves on: Eh- Fútbol 5 - 02	10
3.5 Horizontal Illuminance Values on: Eh- Fútbol 5 - 03	11
3.6 Horizontal Illuminance Iso Curves on: Eh- Fútbol 5 - 03	12
3.7 Horizontal Illuminance Values on: Eh- Fútbol 11	13
3.8 Horizontal Illuminance Iso Curves on: Eh- Fútbol 11	14
3.9 Horizontal Illuminance Values on: Working Plane (h=1.00 m)	15
<b>4 Images</b>	
4.1 Images	16
4.2 Images	17
4.3 Images	18
4.4 Images	19